

3 Sax alto

# Dixie

Harmonium, 1975

arr. Mathieu Gaulin

$\text{♩} = 122$

## Intro

D  
(bary)

G

G7

C

C $\sharp$ dim7

G

D

G

## A (Couplet)

Musical notation for the first staff of the A (Couplet) section. The staff is in treble clef with a key signature of one sharp (F#) and a common time signature (C). The melody begins with a quarter rest, followed by a quarter note G4, an eighth note A4, and a quarter note B4. The staff continues with a series of whole rests. The dynamics *mf* and *mf* are indicated below the staff.

D-7

G7

C

C $\sharp$ dim7

E-7

A9

Musical notation for the second staff of the A (Couplet) section. The staff continues with a series of eighth and quarter notes, including a half note G3. The dynamics *mf* and *mf* are indicated below the staff.

E-7

A7

A-7

C $\sharp$ dim7 D7

G

Musical notation for the third staff of the A (Couplet) section. The staff continues with a series of eighth and quarter notes, including a half note G3. The dynamics *p* and *mf* are indicated below the staff.

D-7

G9

C

C $\sharp$ dim7

E-7

A9

Musical notation for the fourth staff of the A (Couplet) section. The staff continues with a series of eighth and quarter notes, including a half note G3. The dynamics *mf* and *mf* are indicated below the staff.

E-7

A7

A-7

C $\sharp$ dim7 D7

C

## B (Refrain)

Musical notation for the fifth staff of the B (Refrain) section. The staff continues with a series of eighth and quarter notes, including a half note G3. The dynamics *mf* and *mf* are indicated below the staff.

E-/B

B

A-7

D7

A-7

Musical notation for the sixth staff of the B (Refrain) section. The staff continues with a series of eighth and quarter notes, including a half note G3. The dynamics *mf* and *mf* are indicated below the staff.

## C (solo de voix)

D

Chanté!

A $\flat$ Maj7

D-7

G7

Musical notation for the seventh staff of the C (solo de voix) section. The staff continues with a series of eighth and quarter notes, including a half note G3. The dynamics *p* and *mf* are indicated below the staff.

2

## Dixie

C-7

G-/C

G-7/C

C9

A♭Maj9

D-7

G7

33



C-7

G-/C

G-7/C

C9

G

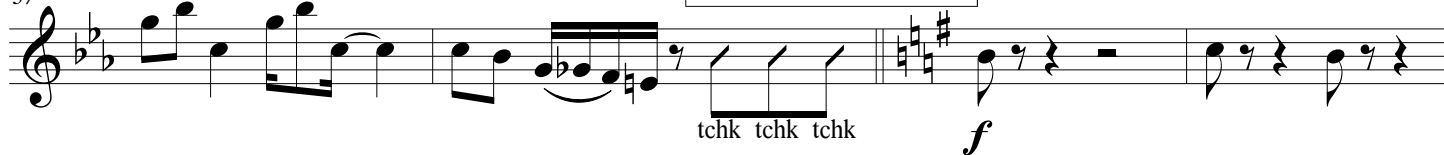
D-7

G9

37

A (solo de clarinette)

au sax



CMaj7

C♯dim7

E-7

A7

41



E-7

A7

A-7

D7

45



G

D-7

G7

CMaj7

C♯dim7

49



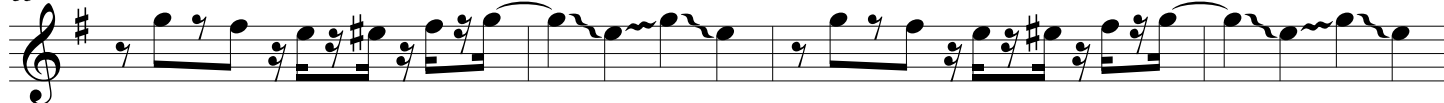
E-7

A7

E-7

A7

53



1/2B (pont)

A-7

D7

CMaj7

E-/B

B

57



C (solo de flute)

A-7

D7

G

A♭Maj7

D-7

G7

61



# Dixie

3

65

C-7 G-7/C C-11 C7 A♭Maj7 D-7 G7

## C (solo d'alto, valeurs augmentées)

69

C-7 F9/C C-7 C7 A♭Maj7 D-7 G7 C- D-7/C

74

E♭/C C7 A♭Maj7 D-7 G7 C-7 B♭/C C-7 C7

*f*

## C (solo de bary)

A♭Maj7 D-7 G7 C- G-/C D-/C C7

Percussion mains sur les cuisses (ou claquette ou cuillères)

Swignez les doubles

A♭Maj7 D-7 G7 C- G-/C D-/C C7

83

C (pont) A♭Maj7 D-7 G7 C- G-/C D-/C C7

*mf*

## Conclusion (Coda)

91

D-/C C7 G G7/B C6 C♯dim7 G/D A-/E D7/F♯ c3

G *f*

95